

| FLOOR PLAN - SYMBOL LEGEND | |
|--|--------|
| DESCRIPTION | SYMBOL |
| INTERIOR LOAD BEARING WALL | |
| STONE OR BRICK VENEER | |
| JOIST SIZE AND DIRECTION | |
| HEADER TYPE | |
| CENTERLINE | |
| POINT LOAD | |
| WINDOW FRAME SIZE IN INCHES (SIZES ARE APPROXIMATE. FINAL WINDOW SELECTION BY BUILDER) | |

| FLOOR JOIST SCHEDULE | | | | | |
|----------------------|---------------------|-------------|---------|------------------|-----------|
| MARK | TYPE | SUB-TYPE | SIZE | SPACING | MAX. SPAN |
| FJ-1 | 1" JOIST (SEE NOTE) | | 9 1/2" | PER MANUFACTURER | |
| FJ-2 | 1" JOIST (SEE NOTE) | | 11 1/8" | PER MANUFACTURER | |
| FJ-3 | 1" JOIST (SEE NOTE) | | 14" | PER MANUFACTURER | |
| FJ-4 | TRUSSED (SEE NOTE) | | 14" | PER MANUFACTURER | |
| FJ-20 | LUMBER | CCA TREATED | 2x10 | 12" O.C. | 16'-2" |
| FJ-21 | LUMBER | CCA TREATED | 2x10 | 16" O.C. | 14' |
| FJ-22 | LUMBER | | 2x8 | 12" O.C. | 14'-2" |
| FJ-23 | LUMBER | | 2x8 | 16" O.C. | 12'-1" |
| FJ-24 | LUMBER | | 2x10 | 12" O.C. | 17'-9" |
| FJ-25 | LUMBER | | 2x10 | 16" O.C. | 15'-5" |
| FJ-26 | LUMBER | | 2-2x10 | 16" O.C. | 19' |

NOTE: 1-JOISTS AND TRUSSES (LOADED W/ TOTAL LIVE AND DEAD LOAD) SHALL BE DESIGNED W/ A MAX. DEFLECTION OF L/360, EXCEPT JOISTS BELOW BATHROOMS AND TILED AREAS SHALL BE DESIGNED WITH A MAX. DEFLECTION OF L/480.

| HEADER SCHEDULE | | | |
|-----------------|-------------------------------|---------------|----------|
| MARK | SIZE | CRIPPLE STUDS | TRIMMERS |
| A | 2 - 2 x 10's | 1 | |
| B | 2 - 2 x 12's | 1 | |
| C | 2 - 2 1/2" x 14" L.V.L.'S | 1 | |
| D | 2 - 2 1/2" x 9 1/2" L.V.L.'S | 2 | |
| E | 2 - 2 1/2" x 11 1/2" L.V.L.'S | 2 | |
| F | 2 - 2 1/2" x 14" L.V.L.'S | 2 | |
| G | 2 - 2 1/2" x 16" L.V.L.'S | 3 | |
| H | 2 - 2 1/2" x 18" L.V.L.'S | 3 | |
| I | 3 - 2 1/2" x 9 1/2" L.V.L.'S | 3 | |
| J | 3 - 2 1/2" x 11 1/2" L.V.L.'S | 3 | |
| K | 2 - 2 1/2" x 9 1/2" L.S.L. | 1 | |
| L | 2 - 2 1/2" x 11 1/2" L.S.L. | 1 | |
| M | 2 - 2 x 8's | 1 | |

NOTE: FOR EXTERIOR AND INTERIOR LOAD BEARING WALLS, ALL HEADERS ARE TO BE TYPE "A" PER THIS SCHEDULE, UNLESS NOTED OTHERWISE.

NOTE: IN BEAM SITUATION, PROVIDE TOTAL NUMBER OF CRIPPLE STUDS & TRIMMERS UNDER EACH END. "U" INDICATES HEADER IS UPSET. SOLID BLOCK BELOW ALL STUDS CARRYING HEADERS.

| COLUMN SCHEDULE | | | | |
|-----------------|--------------------|---------------|----------------|-----------|
| MARK | COLUMN SIZE | PAD SIZE | REINFORCING | MAX. LOAD |
| C | 3" SCHEDULE 40 | 48"x48"x16" | 8- #5 EACH WAY | 24 K |
| D | 3 1/2" SCHEDULE 40 | 60"x60"x18" | 9- #5 EACH WAY | 32 K |
| E | 6" x 6" CCA | 18" DIA. x 3' | | |
| F | 6" x 6" CCA | 24" DIA. x 3' | | |
| G | 8" x 8" CEDAR | 24" DIA. x 3' | | |

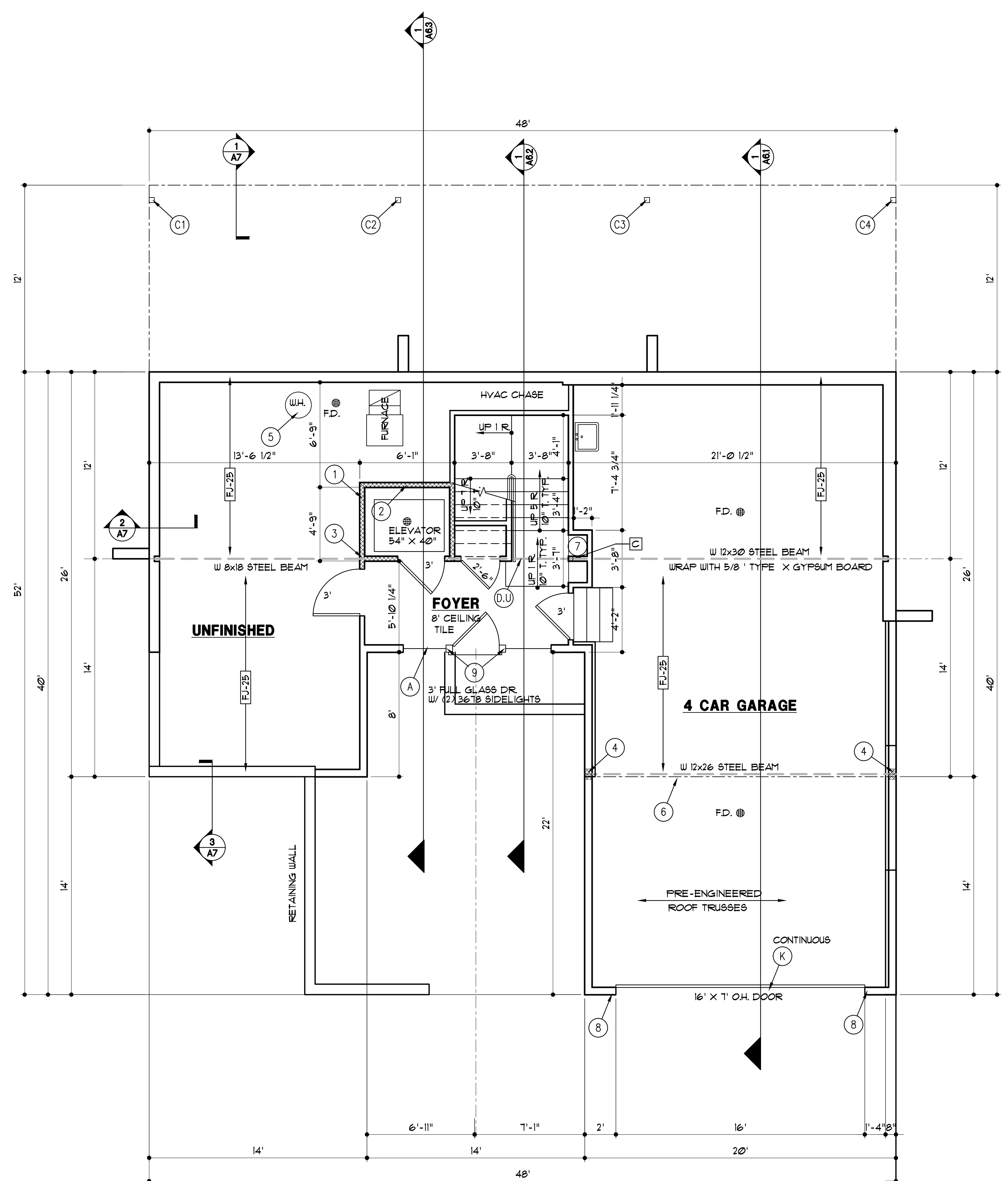
GENERAL NOTES

A. EXTERIOR WALLS ARE 2 x 6 STUDS AT 24" O.C.

B. INTERIOR WALLS ARE 2 x 4 STUDS AT 16" O.C.

FLOOR PLAN NOTES

- 2x4 STUDS @ 16" O.C. W/ TREATED SILL PLATE. INTERIOR OF ELEVATOR SHAFT LINED WITH 5/8" SHEETROCK
- CONTINUOUS BLOCKING FOR ELEVATOR RAILING.
- (3) 2x4 STUDS.
- (4) 2x6 STUDS.
- PROVIDE THERMAL EXPANSION CONTROL DEVICE FOR WATER HEATER.
- EDGE OF FLOOR ABOVE
1. SHELVES FOR SHOES. SEE INTERIOR DRAWINGS FOR DETAILS.
- SEE DETAIL 2 / G2
- 2 STUDS
- 3 2 x 10'S UPSET.



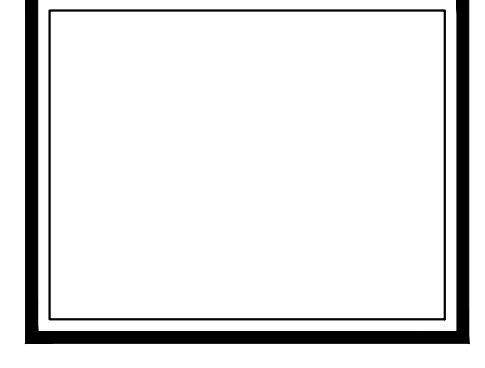
LOWER LEVEL - FLOOR PLAN
1/4" = 1'-0"

COPYRIGHT 2015
EXTRAORDINARY HOMES EXPRESSLY RESERVES ITS COMMON LAW COPYRIGHT AND OTHER PROPERTY RIGHTS IN THESE DRAWINGS. THESE DRAWINGS ARE NOT TO BE REPRODUCED, COPIED, NOT ASSIGNED TO A THIRD PARTY EXCEPT AS REQUIRED FOR BIDDING AND CONSTRUCTION OF THIS SPECIFIC PROJECT.

ExtraordinaryHomes
25055 W. VALLEY PARKWAY, SUITE 110 OLATHE, KS 66061
P. 913-390-4663 • F. 913-390-4664 • XHOMESKC.COM

ROBAR MIKE & JUETTA DUNCAN
LOT 35A LAKEVIEW
WEATHERBY LAKE, MO.

ExtraordinaryHomes REAL ESTATE
ARCHITECTURE CONSTRUCTION



DRAWN BY: KF, MP
DATE: 3-1-15
PROJECT NO: EH14-05

SHEET NO. **A1.1**